

**CD32 Polyclonal Antibody**  
**Rabbit Anti Human Polyclonal Antibody**  
**Catalog # ABV11725****Specification**

---

**CD32 Polyclonal Antibody - Product Information**

Application	WB, E
Primary Accession	<a href="#">P31994</a>
Reactivity	Human
Host	Rabbit
Clonality	Polyclonal
Isotype	Rabbit IgG
Calculated MW	34044

**CD32 Polyclonal Antibody - Additional Information****Gene ID 2213**

Positive Control	WB: Hela cell lysate, Raji cell lysate
Application & Usage	Western Blot: 1:500 - 1:2000 ELISA: 1:20000

**Other Names**

FCGR2B; CD32; FCG2; IGFR2; Low affinity immunoglobulin gamma Fc region receptor II-b; IgG Fc receptor II-b; CDw32; Fc-gamma RII-b; Fc-gamma-RIIb; FcRII-b; CD32

**Target/Specificity**

FCGR2B

**Antibody Form**

Liquid

**Appearance**

Colorless liquid

**Formulation**

PBS containing 50% glycerol, 0.5% BSA and 0.02% sodium azide.

**Handling**

The antibody solution should be gently mixed before use.

**Reconstitution & Storage**

-20 °C

**Background Descriptions****Precautions**

CD32 Polyclonal Antibody is for research use only and not for use in diagnostic or therapeutic procedures.

## CD32 Polyclonal Antibody - Protein Information

**Name** FCGR2B

**Synonyms** CD32, FCG2, IGFR2

### Function

Receptor for the Fc region of complexed or aggregated immunoglobulins gamma. Low affinity receptor. Involved in a variety of effector and regulatory functions such as phagocytosis of immune complexes and modulation of antibody production by B-cells. Binding to this receptor results in down-modulation of previous state of cell activation triggered via antigen receptors on B-cells (BCR), T-cells (TCR) or via another Fc receptor. Isoform IIB1 fails to mediate endocytosis or phagocytosis. Isoform IIB2 does not trigger phagocytosis.

### Cellular Location

Cell membrane; Single-pass type I membrane protein

### Tissue Location

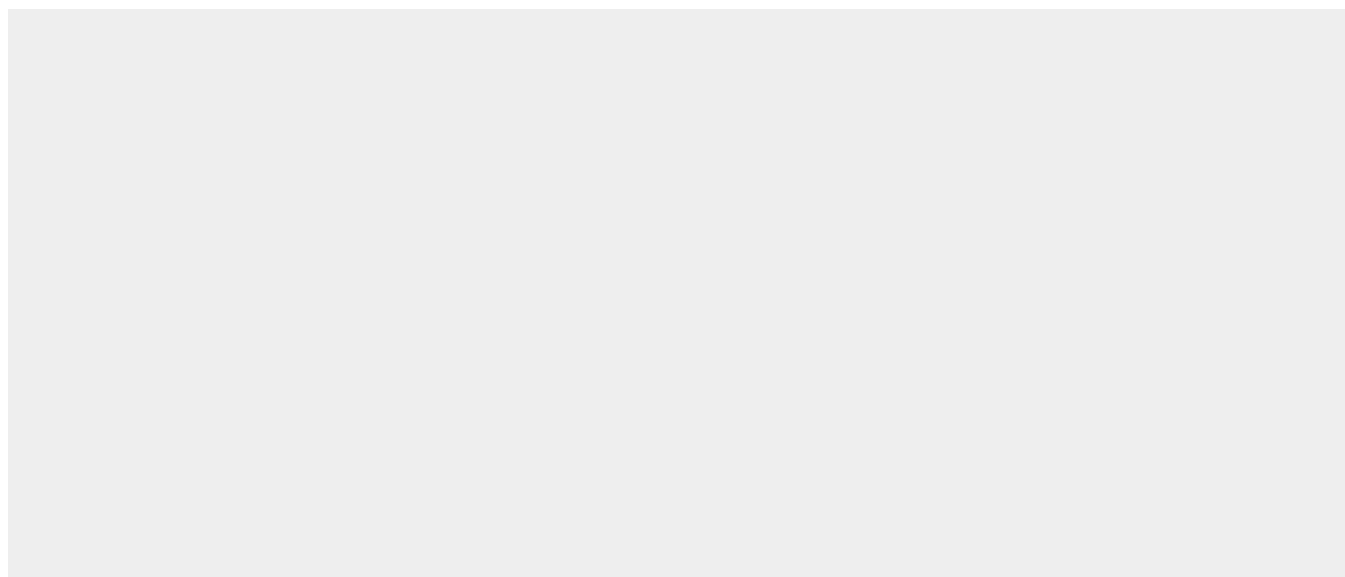
Is the most broadly distributed Fc-gamma-receptor. Expressed in monocyte, neutrophils, macrophages, basophils, eosinophils, Langerhans cells, B-cells, platelets cells and placenta (endothelial cells). Not detected in natural killer cells

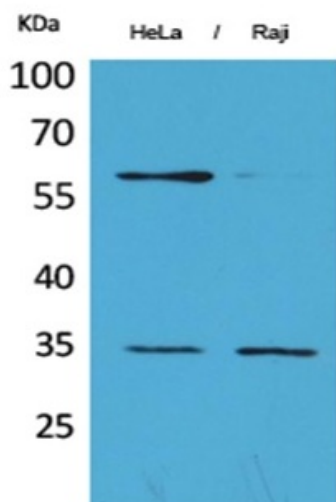
## CD32 Polyclonal Antibody - Protocols

Provided below are standard protocols that you may find useful for product applications.

- [Western Blot](#)
- [Blocking Peptides](#)
- [Dot Blot](#)
- [Immunohistochemistry](#)
- [Immunofluorescence](#)
- [Immunoprecipitation](#)
- [Flow Cytometry](#)
- [Cell Culture](#)

## CD32 Polyclonal Antibody - Images





### CD32 Polyclonal Antibody - Background

Receptor for the Fc region of complexed or aggregated immunoglobulins gamma. Low affinity receptor. Involved in a variety of effector and regulatory functions such as phagocytosis of immune complexes and modulation of antibody production by B-cells. Binding to this receptor results in down-modulation of previous state of cell activation triggered via antigen receptors on B-cells (BCR), T-cells (TCR) or via another Fc receptor. Isoform IIB1 fails to mediate endocytosis or phagocytosis. Isoform IIB2 does not trigger phagocytosis.